



**True Network Scanning.**  
 Integrates into existing networks  
 without additional drivers or PCs.



**ScanWizard**



**EasyScan**

**ScanWizard runs inside Scan2Net<sup>®</sup> scanners.**  
**Supports all browsers on Windows, Mac, Linux PCs.**  
**No software to install, no extra PC required to operate.**

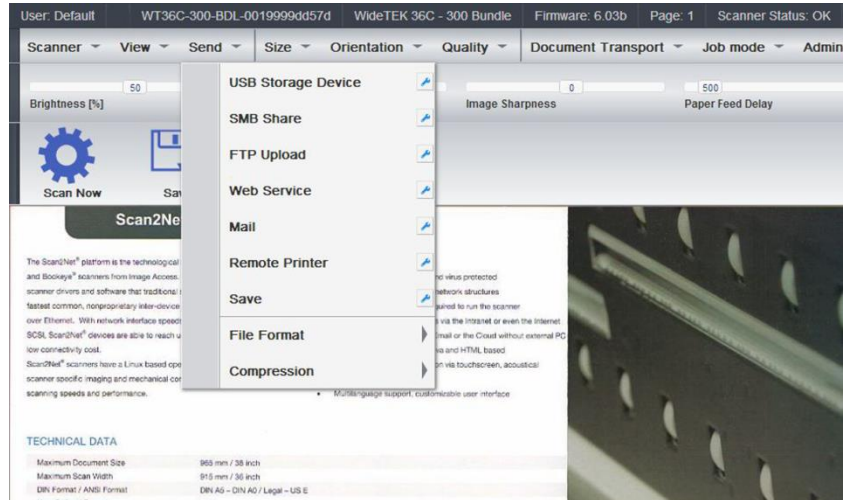
**EasyScan, JAVA based touchscreen application.**  
**Runs inside Scan2Net<sup>®</sup> scanners, fully customizable.**

**Scan2PAD<sup>®</sup>, wireless access to Scan2Net<sup>®</sup> scanners.**  
**Scan with iPADS, Androids and even smartphones.**



### Features of Scan2Net® Scanners:

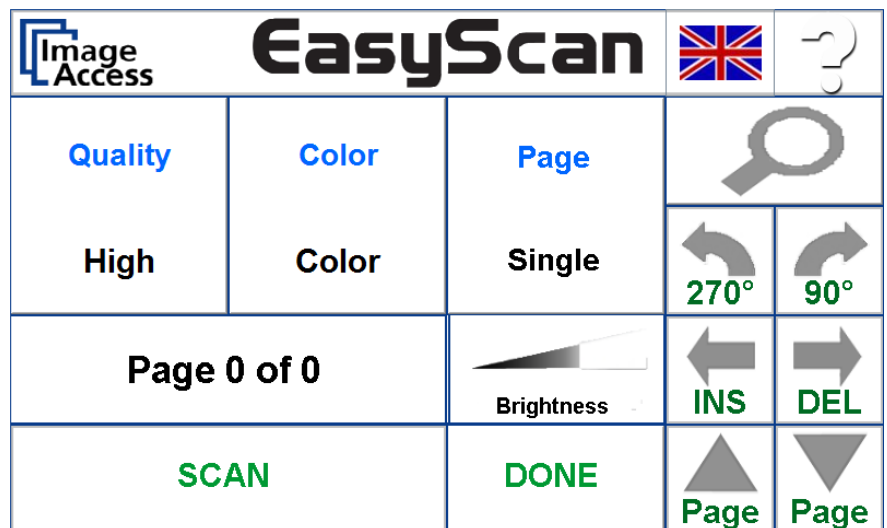
- 64bit Linux operating system with real time processing kernel
- Failsafe file system, factory installed disaster-recovery hard disk partition
- Fully virus protected, USB ports are only temporarily mounted for write operations
- Dual/quad core 1,8 - 3GHz processor with build in graphics engine and X-Windows
- 2 – 8 Gigabytes of scanner memory for longest scans and largest jobs
- Output to SMB shares, FTP-servers, Email, scanner USB ports and more
- On the fly rotation, compression crop & deskew for fastest operation
- Single and multipage file formats, PDF, PDF-A, JPG, TIFF, G4, BMP, PNG and more
- Supported printers include Canon, Oce, HP, Epson and other network printers
- Supported operating systems are 32/64 bit Windows including WIN10, Linux, Mac-OS, Android
- Network: 1GB/s TCP/IP, only one IP address and a browser required to run the scanner
- Supported web browsers: IE7, IE8, Mozilla, Firefox, Chrome, Safari, Opera and more
- Wireless mobile operation via Scan2Pad® for iPADs, Android tablets, smart phones



*Better than just another client software package.*

ScanWizard is part of the Scan2Net® platform running inside the scanner and offers an extensive set of scanning tools and image treatment functions.

ScanWizard is essentially a Java script application which runs on any browser. It is operated like a desktop program and has the same look & feel on all platforms. It is simple and intuitive and is included at no additional cost and with no installation effort.



*More than a couple of buttons on the scanner.*

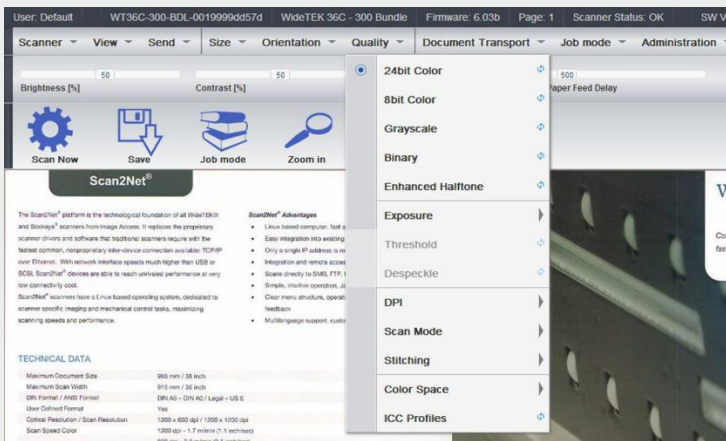
The touchscreen application EasyScan is part of the Scan2Net® platform and runs on the scanners' 7 inch touchscreen. It is a full walkup scanning solution, almost all functions can be accessed directly at the scanner without the need for a separate PC. Best of all, it is fully customizable. Incorporate your company logo, change colors, text and functions of the buttons and modify it to suit your needs.

**The first true scan-to-network scanner platform in the world**  
**Unrivalled performance, highest security, low connectivity cost**

The Scan2Net® platform is the technological foundation of all WideTEK® and Bookeye® scanners from Image Access. It replaces the proprietary scanner drivers and software that traditional scanners require with the fastest common, nonproprietary connection available: TCP/IP over Ethernet. With network interface speeds much higher than USB or SCSI, Scan2Net devices are able to reach unrivalled performance at very low connectivity cost. The Linux based operating system is dedicated to scanner specific imaging and mechanical control tasks, further maximizing scanning speeds and performance.

Connecting Scan2Net® scanners is a snap. Simply connect power and an Ethernet cable directly to a PC or to your organization's network, assign a valid IP address to your Scan2Net® scanner, start your browser and the build-in ScanWizard or use the touchscreen and scan. It's as easy as that!

An intuitive menu leads the operator quickly to the desired feature or function. Select document size and file format, image orientation, output mode, color mode; press the start button and scan. If the settings aren't exactly what you wanted, modify the settings for optimal results without needing to rescan the document.



*Need grayscale? Change the setting in the ScanWizard and save the image without the need to physically rescan the document.*

### ScanWizard

Part of a Scan2Net® scanner is the built in application ScanWizard. It is accessed through any web browser, independent of the operating system and presents a desktop interface with all scanner functions accessible. The browser is also used to display the scanned images and a built in magnifier can be used to look closely into every detail of the scan. The ScanWizards allows operators to scan mixed batches and store them in multipage PDF-A files or other formats.

The optional multiple user management feature and multiple tasks per user implement a complete workflow inside the scanner.

### What is part of a Scan2Net® scanner:

ScanWizard, desktop scanner control software.

- Controls all scanner functions.
- Supports multiple users, multiple jobs and tasks.
- Supports multiple languages.
- Runs on any browser with Java script enabled.
- Identical look & feel on WinX, Mac, Linux platforms
- No need to install drivers, cards or anything else.

EasyScan, touchscreen application on scanner display

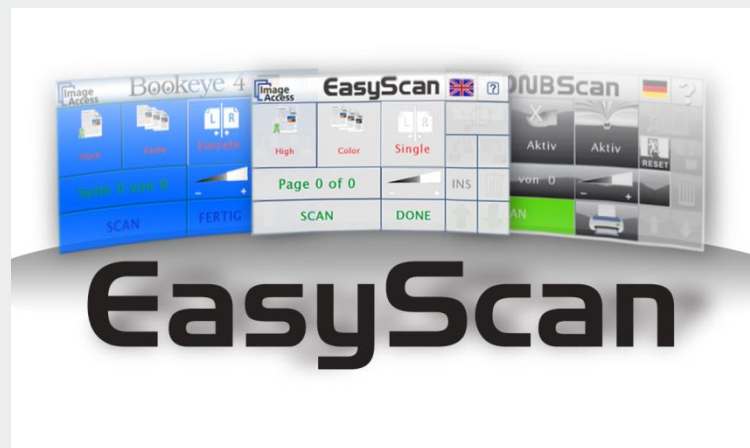
- 7 inch touchscreen with acoustical feedback.
- Easy, intuitive, user friendly operation.
- Clear menu structure, walk up scanning via touchscreen.
- Scans directly to SMB, FTP, Email , USB, printer.
- Customizable for functionality and corporate branding.

Scan2PAD®, scan directly to mobile devices.

- iPad or Android devices used for direct scanning.
- Complete scanner control via PAD.
- Scans avoid the cloud, they stay local and confidential.

Scan2Net API, URL based application programmer interface.

- Can be included in third party apps like BCS-2, Opus.
- Used also by optional TWAIN driver.



*The EasyScan customizing tools for the scanner's touchscreen. Design your own application and include your corporate identity.*

### EasyScan

Scan2Net® scanners can be operated using a web browser or directly at the scanner itself using the EasyScan touchscreen on the front of the scanner. Walk up scanning is perfect for multiuser office environments and the EasyScan interface on the touchscreen offers full access to all functionality of Scan2Net® scanners. The Java based EasyScan application can easily be customized to display customer logos and change the accessible function set.

A large preview screen for convenient quality control ships with the scanner or can be obtained as an optional accessory.

## The Scan2Net® Difference

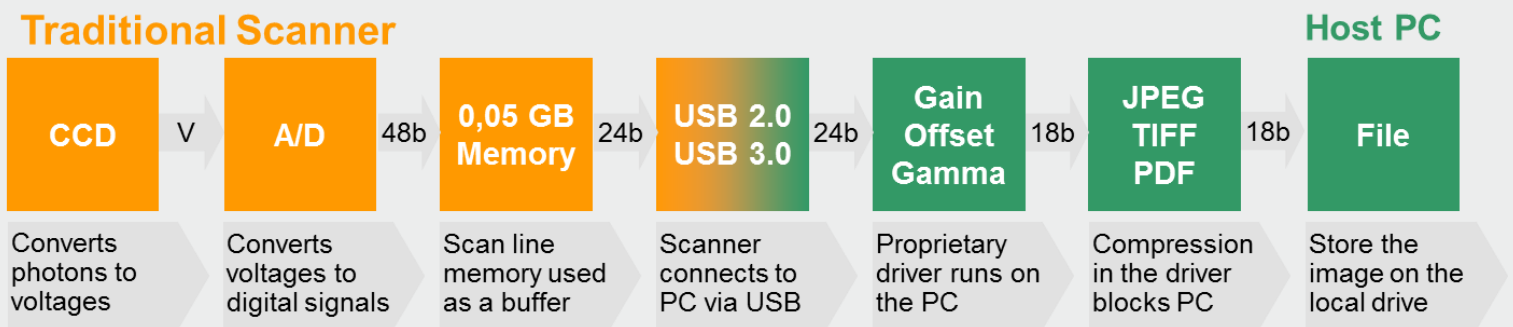
The fundamental difference in architecture between Image Access scanners equipped with Scan2Net® and scanners from other vendors is the Scan2Net® technology. It achieves higher image quality, faster and more reliable scanning as well as host PC independent performance.

Traditional scanners rely heavily on the scanner driver which runs inside the PC. These drivers incorporate third party software parts which may have been developed for other purposes and therefore are probably not the best choice for a scanner driver. The performance of a traditional scanner also relies on the capabilities and resources of the host PC which in many cases are already used up by other non scanner related tasks.

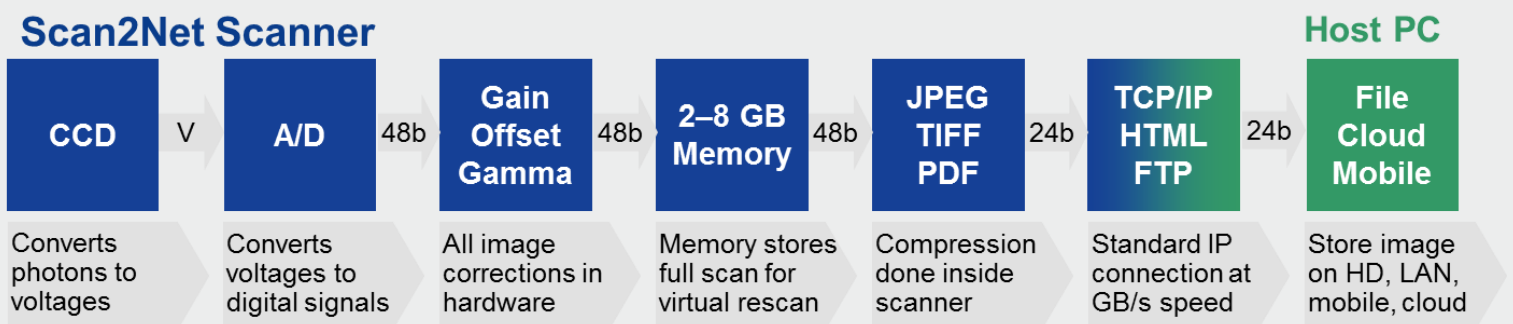
All Scan2Net® scanners feature at least a dual core 64bit processor with 2 – 8 GB of memory, a minimum of a 160 GB hard disk and a high speed, multiple camera interface board. This computer takes over all imaging and machine control tasks through it's real time enabled Linux OS and can run in parallel to the host PC, effectively doubling the computing power of the scanning station.

### Advantages Provided by Scan2Net®:

- Fast and simple integration into existing network structures without software installation.
- The scanning application comes from "inside" the scanner -- an integral part of the Scan2Net® technology.
- Integration and remote access via Internet. Only an IP address is required to identify the Scan2Net® device.
- Operating system independent, scan using any browser (e.g. Internet Explorer, Firefox, Mozilla, Opera, Safari).
- Touchscreen operation enables simple to operate, true walk up scanning.



In a Scan2Net® scanner, all image processing is performed inside the scanner. No third party libraries like JPEG compression DLLs can erode the quality of the images. Only the clean, compressed file is send to the network, the PC, the cloud or anywhere in the Internet. This not only reduces traffic but preserves much more resolution.



Read the Scan2Net White Paper to understand the technological advantages of a firmware platform over an additional software package installed on a client PC.

IMAGE ACCESS GMBH

Hatzfelder Str. 161-163  
42281 Wuppertal, Germany  
Phone: +49 202 270 58-0

[www.imageaccess.de](http://www.imageaccess.de)

IMAGE ACCESS LP

400 N. Belvedere Drive  
Gallatin, TN 37066, USA  
Phone: +1 (615) 675-4141

[www.imageaccess.us](http://www.imageaccess.us)

GSA Contract Holder: Contract # GS 35F 0203Y

Technical changes, errors and omissions excepted.  
All information subject to change. © Image Access GmbH 2022